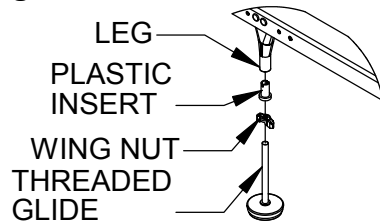


756 ASSEMBLY INSTRUCTIONS

Figure 1

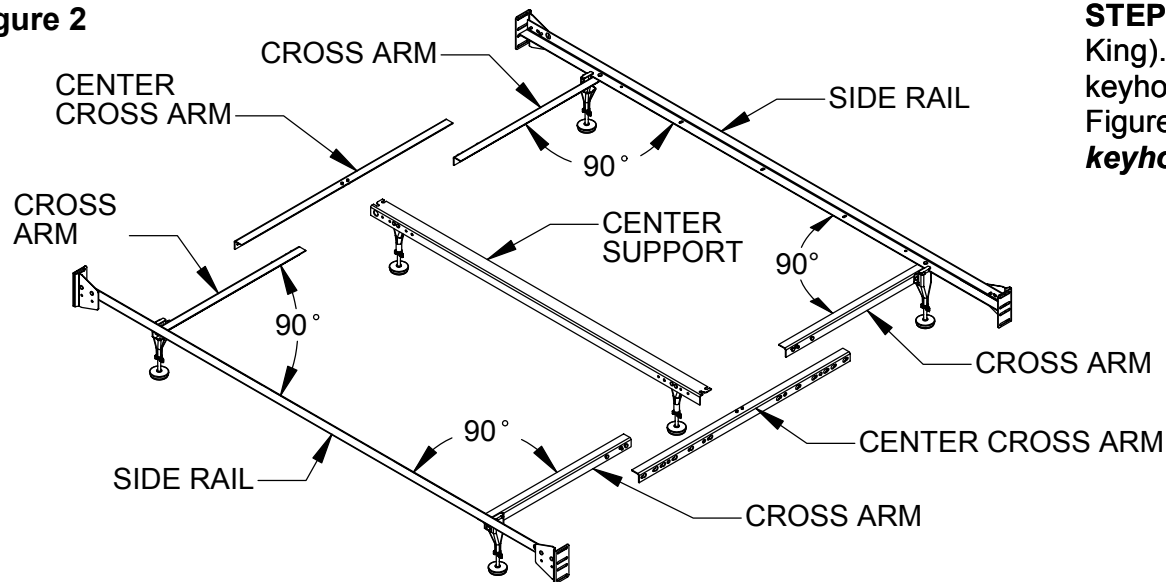


STEP 1 To install **THREADED GLIDES**, tap **PLASTIC INSERTS** into **LEGS** as shown in Figure 1. With flat surface up, thread **WING NUTS** onto **THREADED GLIDES**, then screw **THREADED GLIDES** about halfway into **PLASTIC INSERTS**.

STEP 2 Swing out **CROSS ARMS** 90 degrees as shown in Figure 2.

STEP 3 Turn **CENTER SUPPORT** over with legs pointing up. Attach **CENTER CROSS ARM** by inserting **RIVET "A"** into **NOTCH "A"** then pivot so **RIVET "B"** locks into **NOTCH "B"** as shown in Figure 3. Repeat with other **CENTER CROSS ARM**.

Figure 2



STEP 4 Determine desired bedding size (Queen or King). Slide **SHOULDER RIVETS** into proper keyholes of **CENTER CROSS ARMS** as indicated in Figure 4. **Note: Both rivet heads must engage in keyhole slots.**

STEP 5 Attach bed frame to headboard and footboard.

STEP 6 Adjust **THREADED GLIDES** so they touch the floor. Tighten all **WING NUTS**.

Note: There must be at least 1" of the glide stem in the plastic insert.

Figure 3

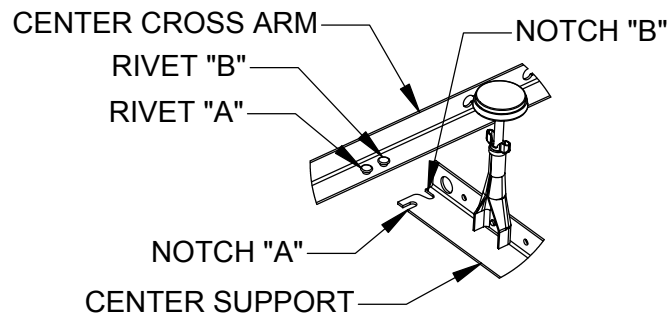
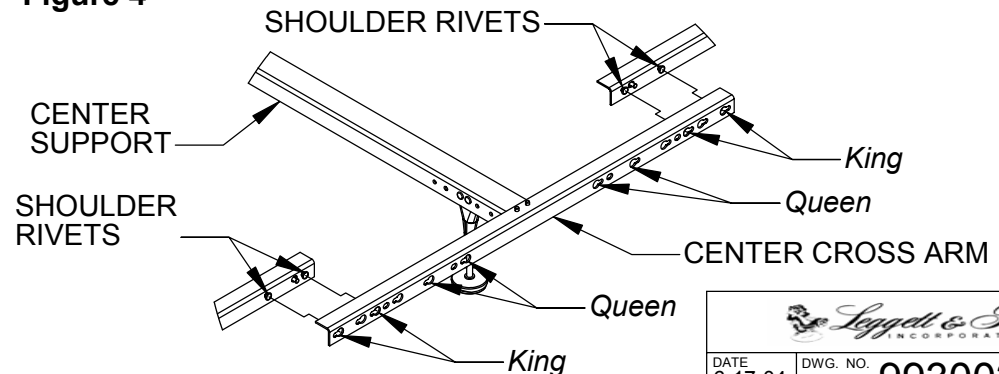


Figure 4



Leggett & Platt
INCORPORATED

DATE
6-17-04

DWG. NO.

99300281

DO NOT SCALE DRAWING

SHEET 1 OF 1